



Children's Social Care Performance & Quality Assurance Report

Quarter 4 (January - March 2020) and Year End

Scrutiny

Quarter 4 2019/20 Performance Summary

Referral:

The referrals completed within 1 working day has seen a steady improvement since Q2, giving a year end figure of 86.8%.

Re-Referrals:

Children who are re-referred compare favourably with statistical neighbour, regional and national comparators with a rate of 17.2%.

Early Help:

There has been an increase of 24 Early Help Assessments completed from the previous year, with a total of 893 by the end of 2019/20.

Missing:

Of the children who go missing from home, 85.8% have been offered an interview within the 72-hour timescale. Where the coordinator cannot engage the young person, discussion takes place with parents, carers, teachers or social workers to offer insight around reducing the missing episodes. Of those young people who went missing, 17.7% were Children in Care.

Children & Families Assessments:

950 Children were assessed by the end of Q4 2019/20, which represents a 7.3% decrease on the same period last year. The rate of assessments is 422.7 per 10,000 of the population.

Timeliness:

Social workers completed 88.7% of timely assessments on children, which is an increase from the same period last year (81.5%), although slightly below our target of 90%.

Section 47 enquiries:

During 2019/20, there were 484 Section 47 enquiries started which is 162 (25.1%) fewer when compared with the previous year (646), our year end rate of enquiries per 10,000 population was 216.2.

Child Protection Conferences:

By year end 2019/20, the cumulative figure for Initial Child Protection Conferences (ICPC) being held within 15 working days from the strategy meeting / Section 47 being initiated was 89.5%, (18 children), excluding transfer-in conferences, against our target of 95%.

Child Protection Plans:

85 children were subject to a Child Protection Plan as at the end of March 2020, which equates to a rate of 37.8 per 10,000 population, compared to 103 and a rate of 45.7 per 10,000 population for the same period last year. All Child Protection cases were allocated to a Social Worker.

Child Protection Statutory visits:

79.6% of children received a statutory child protection visit during 2019/20 within 10 working days. Statutory visits that do not take place within timescales are scrutinised each month and where visits are not taking place in a timely manner, they are generally missed only by a day or two, and those which are longer are due to non-engagement of families and escalated accordingly.

Children in Care:

By the end of 2019/20 the number of Children in Care was 270. During Q4 2019/20 a total number of 22 children came into the care of the Local Authority. This is lower than Q1 2019/20 (37) and Q2 2019/20 (32), although higher than Q3 2019/20 when 18 children came into care. During 2019/20, 104 children ceased to be in care.

Statutory visits of Children in Care

89.0% of children in care received their timely statutory visit during 2019/20, which is an improvement on last year. Those statutory visits that do not take place within timescale are scrutinised each month with action taken if required.

Placements:

By the end of 2019/20 the percentage of children who had experienced 3 or more placement moves was 11.1%. It should be noted that some children in this cohort have moved for positive reasons, such as to an adoption placement or to their long-term placement.

The percentage of children who had been in their current placement for 2 years or more was 73.6% by the end of 2019/20, exceeding the target set of 68%. The sustained improvement in this performance has a positive impact on children in care, as they are able to experience permanent,

consistent and stable home lives with their carer, enabling them to focus their energies on being children and young people who are able to develop both physically and emotionally, rather than worry about where they may be moved to next.

The percentage of children placed 20 miles or more away from home is in line with our target at 9.6%. This relates to 25 young people who have been placed in residential care due to their disability / with family / or adoption and this provision was not available within 20 miles.

Dental and Health Review:

By the end of 2019/20, 93.3% of children in care who were due a review health check have had one completed and recorded.

Similarly, by the end of 2019/20, 90.2% of children in care that were due a dental check assessment have had one completed.

The percentage of children who have refused their medical checks has continued to decrease, with only 7 refusing their health review and 13 refusing their dental review by the end of the year. Although they are refusing, they are continually reminded of the benefits of having a check-up and encouraged to take part.

Care Leavers:

98.2% of care leavers were in suitable accommodation by the end of 2019/20. Custody is not recognised as suitable accommodation.

The percentage of Care Leavers who were Not in Education, Employment or Training (NEET) positively continues to exceed the target set of 30% at 28.1% by the end of 2019/20.

REFERRALS - TIMELINESS

DEFINITION

Percentage of referrals completed within 24 hours and over 72 hours. Referrals completed within 24 hours indicates that decisions regarding the services required are made in a timely manner to minimise drift and delay and to ensure that children are safe.

PERFORMANCE ANALYSIS

The referrals completed within 1 working day has seen a steady improvement since Q2 2019/20 giving a year end total of 86.8%.

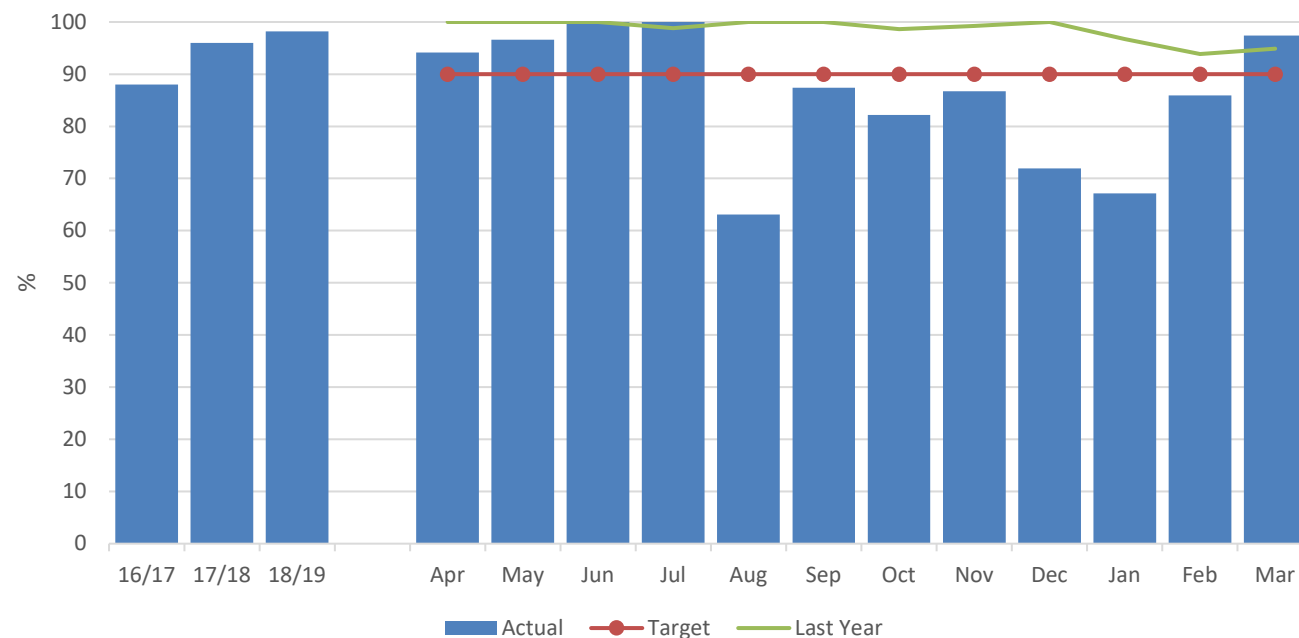
CSC 022

CSC 022: Monthly % of referrals completed within 1 working day.

Monthly % of referrals completed within 1 working day.

IN MONTH PERFORMANCE

Target	90%
Apr-19	94.2
May-19	96.6
Jun-19	100.0
Jul-19	100.0
Aug-19	63.1
Sep-19	87.4
Oct-19	82.2
Nov-19	86.7
Dec-19	71.9
Jan-20	67.1
Feb-20	85.9
Mar-20	97.4



ANNUAL TREND

2016/17	88.0
2017/18	96.0
2018/19	98.2
2019/20	86.8

REFERRALS - RE-REFERRALS

DEFINITION

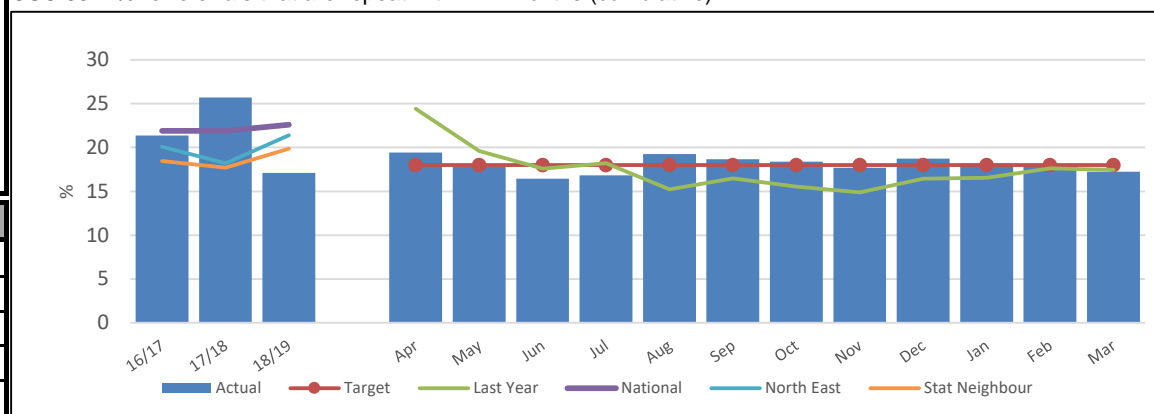
Percentage of re-referrals that are received within 12 months of a previous referral (based on referral start dates)
A re-referral to Children's Social Care could be an indication that the previous referral was inappropriately closed down without addressing the initial concerns or issues.

PERFORMANCE ANALYSIS

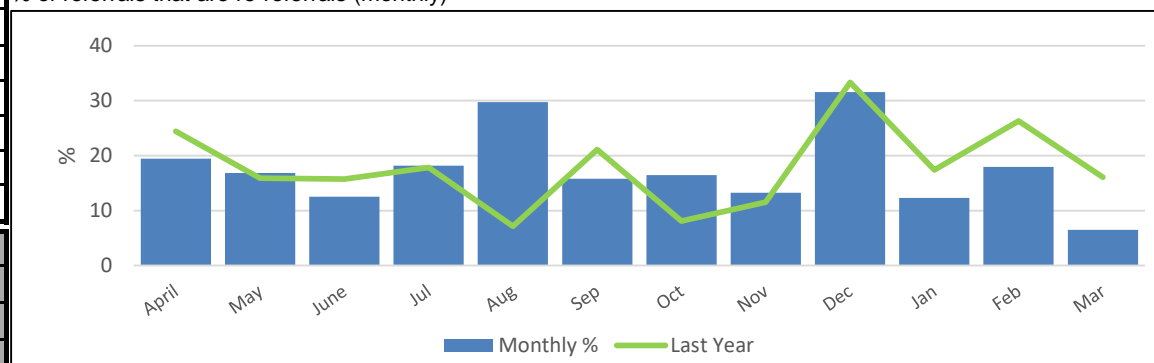
171 re-referrals have been made during 2019/20 equating to 17.2% of referrals being repeated within 12 months. This is a similar percentage to the re-referrals in 2018/19 (17.1%) and compares favourably with our statistical neighbours (19.9%) and national (22.6%) and regional averages (21.4%).

IN MONTH PERFORMANCE	Target	CSC 034	CSC 032	
		Monthly number of re-referrals that are repeat within 12 months	% re-referrals that are repeat within 12 months (cumulative)	% of referrals that are re-referrals (monthly)
	18%			
	Apr-19	20	19.4	19.4
	May-19	15	18.2	16.9
	Jun-19	11	16.4	12.5
	Jul-19	14	16.8	18.2
	Aug-19	25	19.3	29.8
	Sep-19	15	18.7	15.8
	Oct-19	12	18.4	16.4
	Nov-19	13	17.7	13.3
	Dec-19	18	18.7	31.6
ANNUAL TREND	Jan-20	9	18.2	12.3
	Feb-20	14	18.1	17.9
	Mar-20	5	17.2	6.5
ANNUAL TREND	2016/17	314	21.4	
	2017/18	247	25.7	
	2018/19	205	17.1	
	2019/20	171	17.2	

CSC 032: % re-referrals that are repeat within 12 months (cumulative)



% of referrals that are re-referrals (monthly)



EARLY HELP ASSESSMENTS - STARTED

DEFINITION

The number of individual Early Help Assessments (EHA) started in month and year to date, including those initiated by external agencies. The start date of the EHA is taken from the form created date in Liquid Logic and the start date of the external EHA is taken from the contact date when the agency informed us of the EHA.

PERFORMANCE ANALYSIS

893 Early Help Assessment's (EHA) were started during 2019/20, which is an increase on the 869 started in 2018/19.

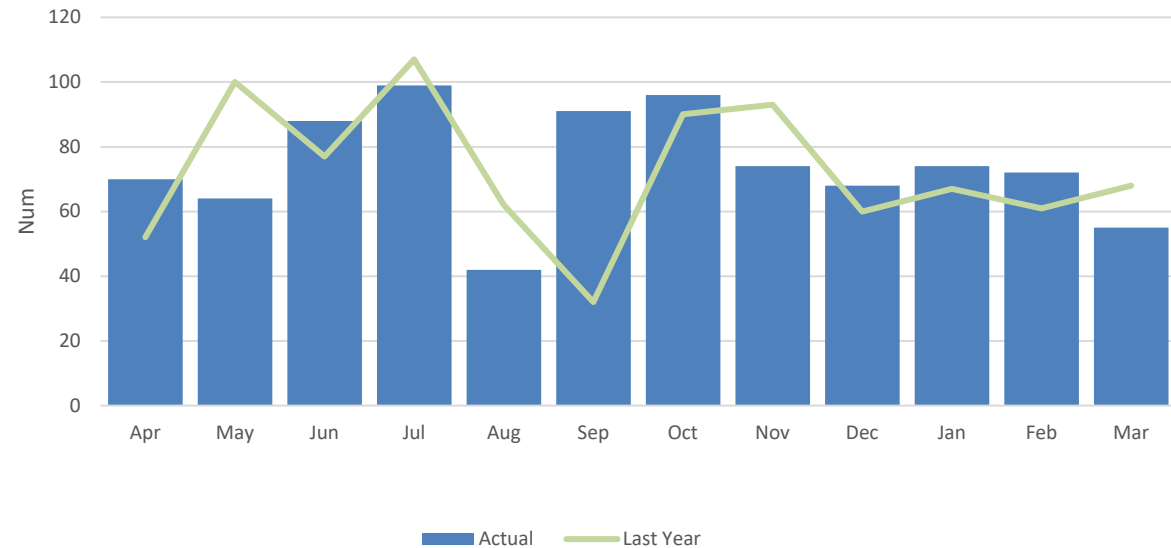
CSC 002

Total number of individual EHA's started in month (inc. external)

CSC 002: Total number of individual EHA's started in month (inc. external)

IN MONTH PERFORMANCE

Apr-19	70
May-19	64
Jun-19	88
Jul-19	99
Aug-19	42
Sep-19	91
Oct-19	96
Nov-19	74
Dec-19	68
Jan-20	74
Feb-20	72
Mar-20	55



ANNUAL TREND

2016/17	871
2017/18	877
2018/19	869
2019/20	893

MISSING EPISODES	
DEFINITION	The number of episodes of children going missing in Darlington, including Children in Care, Children in Care with another authority
PERFORMANCE ANALYSIS	The missing episodes for the Darlington CiC population is 17.7%. Where children are looked after by other authorities but cared for in Darlington, the ERASE Team have been alerted and provided with relevant information to ensure that the young people have been appropriately placed.

CSC 246			
Number of missing episodes relating to Children in Care with DBC (children)			
IN MONTH PERFORMANCE		Ep.	Child.
	Apr-19	12	5
	May-19	19	6
	Jun-19	7	3
	Jul-19	15	6
	Aug-19	9	7
	Sep-19	7	5
	Oct-19	6	4
	Nov-19	9	7
	Dec-19	10	7
	Jan-20	9	5
	Feb-20	13	7
	Mar-20	13	6
ANNUAL TREND child counted once	2017/18		
	2018/19	199	36
	2019/20	129	24

ASSESSMENTS

DEFINITION

PERFORMANCE ANALYSIS

950 C&F assessments have been completed in total throughout the 2019/20 period, which is 7.3% decrease on the 1,025 completed throughout 2018/19. This has resulted in a 422.7 rate of C&F assessments completed per 10,000 of the 0 – 17 year population. This is below the national average of 539.3 and regional average of 686.6 as reported in the CiN census 2018/19.

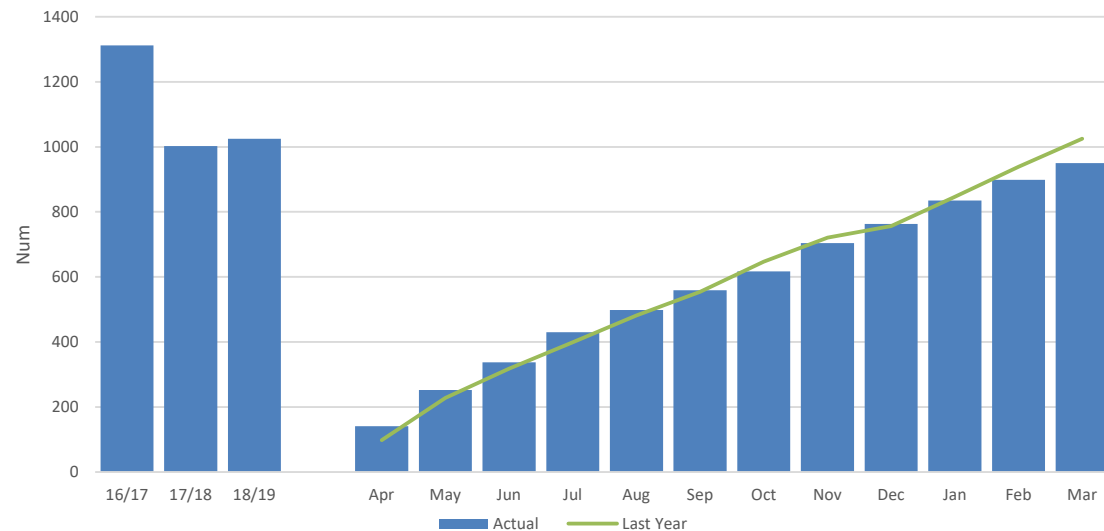
CSC 036

Number of children & families assessments completed year to date

CSC 036: Number of children & families assessments completed year to date

IN MONTH PERFORMANCE

Apr-19	141
May-19	252
Jun-19	337
Jul-19	430
Aug-19	498
Sep-19	559
Oct-19	617
Nov-19	704
Dec-19	763
Jan-20	835
Feb-20	899
Mar-20	950



ANNUAL TREND

2016/17	1,312
2017/18	1,002
2018/19	1,025
2019/20	950

ASSESSMENTS - TIMELINESS

DEFINITION	<p>Of those assessments completed in a period, the percentage completed within 45 working days. Day zero is the first working day on or after the start date of the referral, or strategy discussion decided to initiate S47 enquiries, or where new information indicates that an assessment should be undertaken. The end date is the first working day on or after the recorded date the Team Manager closes the single assessment.</p> <p>A process indicator as a proxy measure for improved child safety and how quickly services can respond when a child is thought to be at risk of serious harm. Local authorities should investigate and address concerns in a timely and efficient way.</p>
------------	---

PERFORMANCE ANALYSIS	<p>88.7% of the Children & Families assessments were completed within 45 working days during the 2019/20 period, which is an increase from the same period last year (81.5%).</p> <p>The 88.7% rate of C&F assessments completed within timescale, brings Darlington in line with our statistical neighbour (87.1%) and above Regional (83.0%) and National (83.1%) averages as recorded for 2019 in the LAIT, although below our target of 90%.</p>
----------------------	--

CSC 038
% C&F Assessments completed within 45 working days (Year to date)

IN MONTH PERFORMANCE	Target	90%
	Apr-19	84.4
	May-19	86.5
	Jun-19	88.1
	Jul-19	90.7
	Aug-19	91.4
	Sep-19	92.0
	Oct-19	92.4
	Nov-19	91.9
	Dec-19	90.4
	Jan-20	91.4
	Feb-20	89.2
	Mar-20	88.7
ANNUAL TREND	2016/17	93.0
	2017/18	93.3
	2018/19	81.5
	2019/20	88.7

SECTION 47 - STARTED

DEFINITION

Number of Section 47 enquiries started monthly and year to date.

PERFORMANCE ANALYSIS

484 Section 47 enquires were started during the 2019/20 period, which is a 25.1% decrease on the 646 that commenced in the 2018/19 period.

The rate of enquires started, as a result of this decrease, now equates to 216.2, which is above our statistical neighbour (184.7) and national average (168.3) although below the regional average (242.8) as recorded for 2019 in LAIT.

CSC 166

All children who had a section 47 enquires started in the month

CSC 164

Rate of Section 47 enquiries started per 10,000 of the 0-17 population (Cumulative)

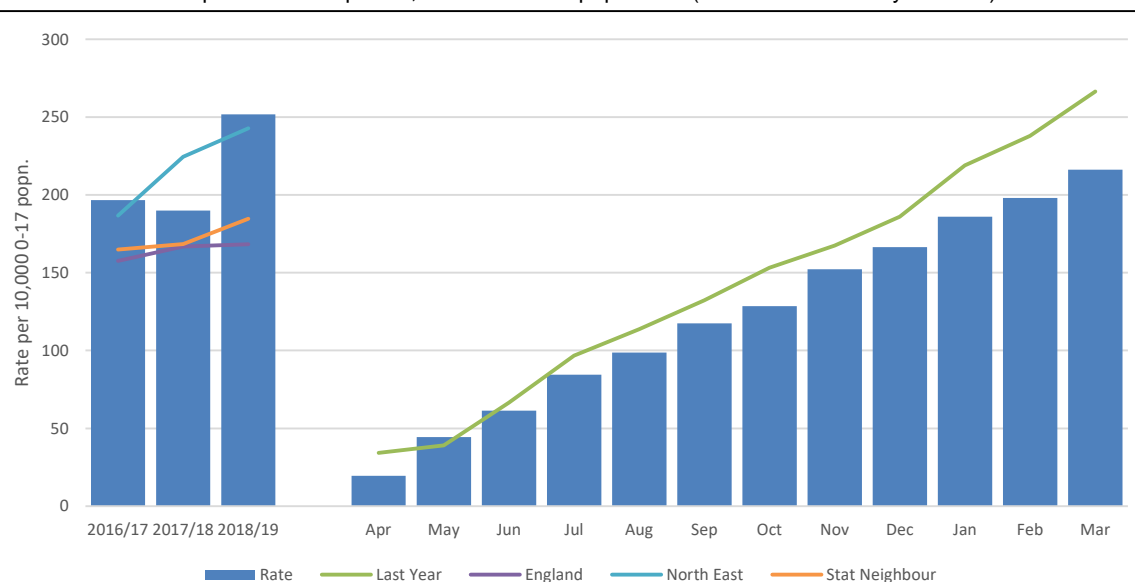
Rate of section 47 enquiries started per 10,000 of the 0-17 population (inc. children already on CPP)

IN MONTH PERFORMANCE

Apr-19	44	19.6
May-19	56	44.5
Jun-19	38	61.4
Jul-19	51	84.5
Aug-19	32	98.8
Sep-19	42	117.5
Oct-19	25	128.6
Nov-19	52	152.2
Dec-19	32	166.4
Jan-20	44	186.0
Feb-20	27	198.0
Mar-20	41	216.2

ANNUAL TREND

2016/17		196.6
2017/18	426	190.0
2018/19	646	251.8
2019/20	484	216.2



INITIAL CHILD PROTECTION CONFERENCES - TIMELINESS

DEFINITION

Of those ICPC's held within the period (excluding transfer ins), the percentage held within 15 working days of the S47 enquiry. Provides an indication of how quickly the safety of children who are judged to be continuing to, or likely to suffer significant harm is being considered by a multi-agency meeting.

PERFORMANCE ANALYSIS

Of the 171 Initial Child Protection Conferences (ICPC) that were held in 2019/20 (that were not transfer-in cases), 153 were in timescale (89.5%). Darlington's performance remains higher than our statistical neighbour (82.4%), regional (82.1%) and national averages (78.7%).

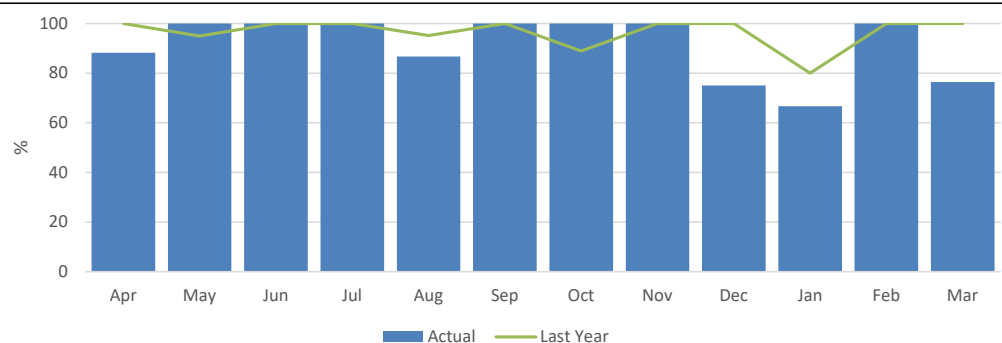
CSC 178

Monthly % of cases recorded in the Safeguarding Unit workbook where Child Protection strategy meeting / S47 start to initial child protection conference (ICPC) are within 15 days (CPP). Excludes transfer-in conferences.

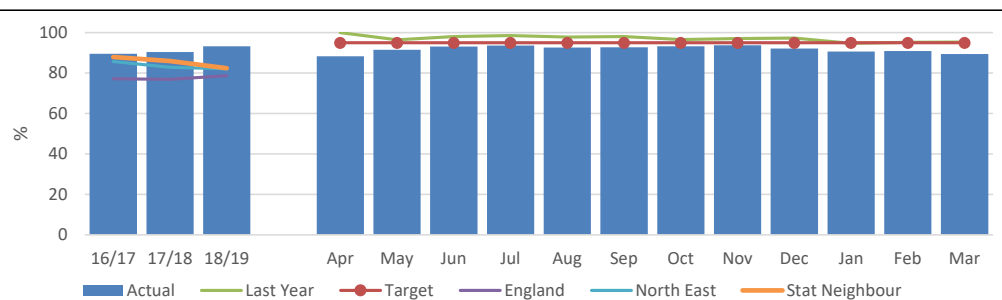
CSC 176

% of cases where the initial child protection conference (ICPC) was within 15 days of the initiating strategy discussion / S47 start recorded in the Safeguarding Unit workbook (CPP). This EXCLUDES transfer-in conferences. Year to Date

CSC 178: Monthly % of cases recorded in the Safeguarding Unit workbook where Child Protection strategy meeting / S47 start to initial child protection conference (ICPC) are within 15 days (CPP). Excludes transfer-in conferences.



CSC 176: % of cases where the initial child protection conference (ICPC) was within 15 days of the initiating strategy discussion / S47 start recorded in the Safeguarding Unit workbook (CPP). This EXCLUDES transfer-in conferences. Year to Date



IN MONTH PERFORMANCE	Target	100	95
	Apr-19	88.2	88.2
	May-19	100.0	91.6
	Jun-19	100.0	93.1
	Jul-19	100.0	93.6
	Aug-19	86.7	92.6
	Sep-19	100.0	92.8
	Oct-19	100.0	93.3
	Nov-19	100.0	93.8
	Dec-19	75.0	92.1
	Jan-20	66.7	90.6
	Feb-20	100.0	90.9
	Mar-20	76.5	89.5
ANNUAL TREND	2016/17	100.0	100.0
	2017/18	95.0	95.0
	2018/19	95.4	95.4
	2019/20	76.5	89.5

CHILD PROTECTION

DEFINITION

Number of children subject to a Child Protection Plan at the end of the month.

PERFORMANCE ANALYSIS

85 children were subject to a Child Protection Plan (CPP) as at the end of March 2020. This is a 17.5% reduction when compared to March 2019 (103) and a 26.1% reduction compared with March 2018 (115).
Darlington currently has a 37.8% rate per 10,000 for children subject to a CPP which is lower than the regional average (63.1%), statistical neighbour (50.4%) and the national average (43.7%) as reported in the 2019 LAIT.

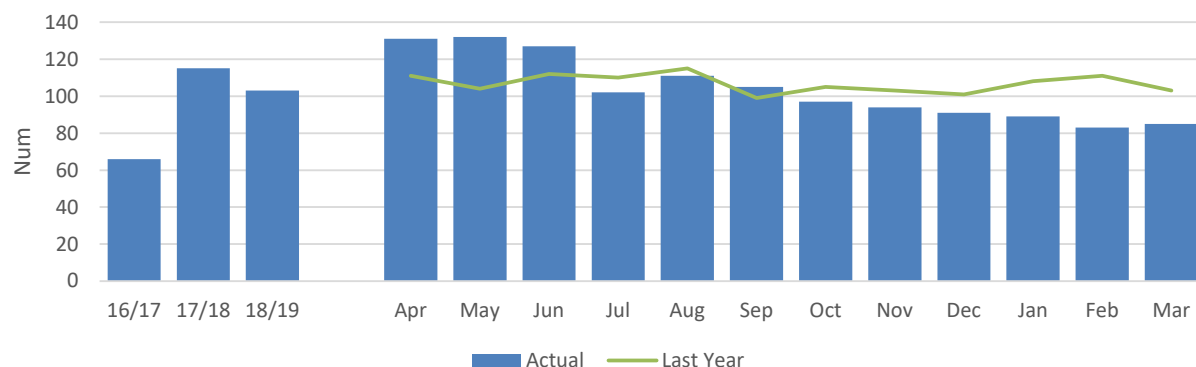
CSC 182

Number of children subject to a child protection plan

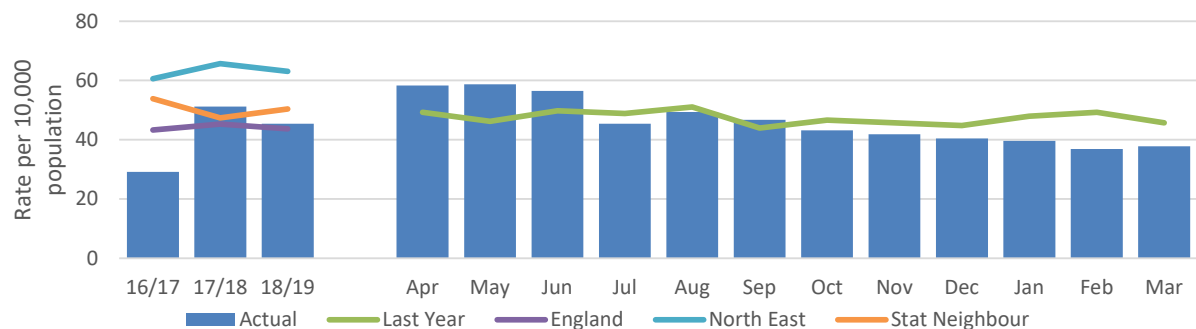
CSC 181

Rate of children subject to a Child Protection Plan per 10,000 population

CSC 182: Number of children subject to a child protection plan



CSC 181: Rate of children subject to a Child Protection Plan per 10,000 population



IN MONTH PERFORMANCE

Month	Number of children subject to a child protection plan	Rate of children subject to a Child Protection Plan per 10,000 population
Apr-19	131	58.3
May-19	132	58.7
Jun-19	127	56.5
Jul-19	102	45.4
Aug-19	111	49.4
Sep-19	105	46.7
Oct-19	97	43.2
Nov-19	94	41.8
Dec-19	91	40.5
Jan-20	89	39.6
Feb-20	83	36.9
Mar-20	85	37.8

ANNUAL TREND

Year	Number of children subject to a child protection plan	Rate of children subject to a Child Protection Plan per 10,000 population
2016/17	66	29.2
2017/18	115	50.8
2018/19	103	45.7
2019/20	85	37.8

CHILD PROTECTION - ALLOCATION & REVIEWS

DEFINITION

The percentage of children subject to a Child Protection Plan at the end of the month and who at that date had had a Plan continuously for at least the previous 3 months, whose case was reviewed within the required timescales.

Reviews are a key element in delivering Child Protection Plans and effective reviews should ensure the provision of good quality interventions. This indicator is a proxy for the measurement of effectiveness of the interventions provided to children subject to a Child Protection Plan. "Working Together to Safeguard Children" guidance requires that the first review should be within 3 months of the initial child protection conference and thereafter at intervals of no more than 6 months.

PERFORMANCE ANALYSIS

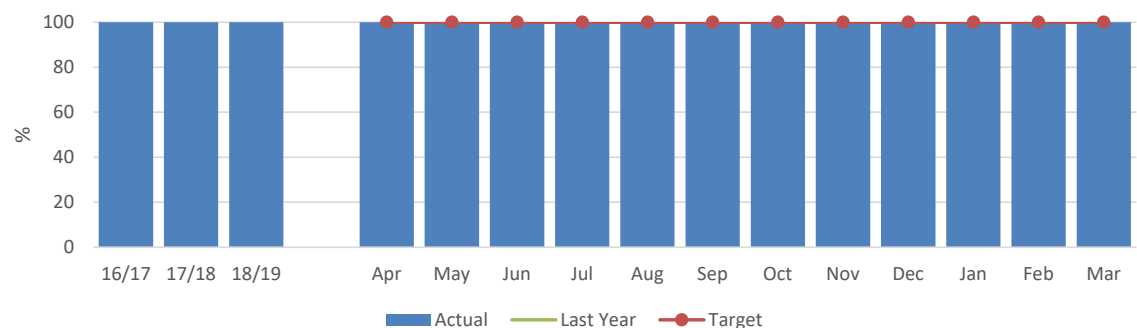
100% of Child Protection cases were allocated to a qualified social worker.

98.2% of Child Protection reviews have been completed within the required timescales which is similar to the 98.4% completed during 2018/19.

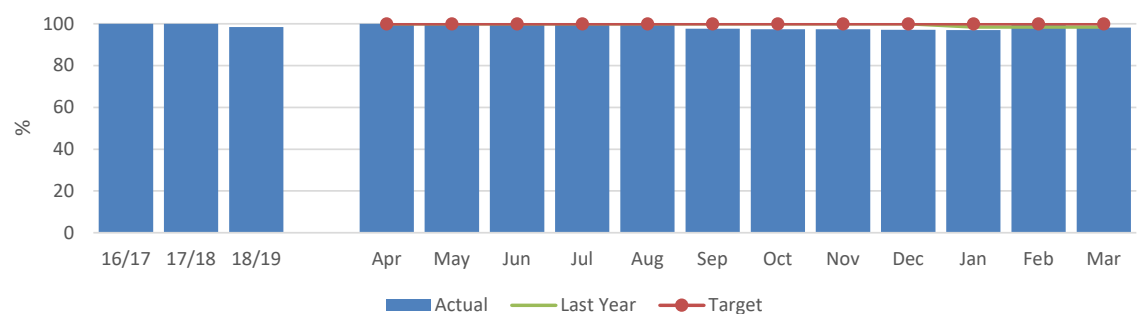
Darlington performance remains higher than statistical neighbours (94.2%), regional (92.7%) and national averages (91.8%) as reported in the 2019 LAIT.

IN MONTH PERFORMANCE	Target	CSC 183	CSC 191
		% Child Protection cases allocated to a qualified Social Worker	% of Children who were subject of a child protection plan whose case was reviewed within the required timescales.
	100	100	100
	Apr-19	100.0	100.0
	May-19	100.0	100.0
	Jun-19	100.0	100.0
	Jul-19	100.0	100.0
	Aug-19	100.0	100.0
	Sep-19	100.0	97.7
	Oct-19	100.0	97.4
	Nov-19	100.0	97.4
	Dec-19	100.0	97.1
	Jan-20	100.0	97.0
ANNUAL TREND	Feb-20	100.0	100.0
	Mar-20	100.0	98.2
	2016/17	100.0	100.0
	2017/18	100.0	100.0
	2018/19	100.0	98.4
	2019/20	100.0	98.2

CSC 183: % Child Protection cases allocated to a qualified Social Worker



CSC 191: % of Children who were subject of a child protection plan whose case was reviewed within the required timescales.



CHILD PROTECTION - TIME PERIODS

DEFINITION	<p>Percentage of children ceasing to be subject to a Child Protection Plan who had been subject to a Plan for 2 or more years, and percentage of children becoming subject to a Child Protection Plan for the 2nd or subsequent time within a) 2 years of a previous plan, and b) with a previous plan at any point.</p> <p>These indicators reflect the underlying principle that professionals should be working towards specified outcomes which, if implemented effectively, should lead to all children not needing to be the subject of a Child Protection Plan within a maximum of two years, or becoming subject of a Child Protection Plan for a second or subsequent time.</p>
------------	--

PERFORMANCE ANALYSIS	<p>At the end of March 2020 the figure for children becoming subject to a CP plan for a second or subsequent time within 2 years of the previous plan ending was 3.2%</p> <p>Year to date, 0.6% of children who had their plan ceased, had been subject to a CPP for 2 years or more. This continues to remain below the target of 5%.</p>
----------------------	--

		CSC 186	CSC 188	CSC 186: % children ceasing to be subject of a CPP who had been subject to a CPP for 2 or more years (Cumulative)
		% children ceasing to be subject of a CPP who had been subject to a CPP for 2 or more years (Cumulative)	% of children becoming subject to a CPP for a 2nd or subsequent time within 2 years of a previous plan ending (Cumulative)	
IN MONTH PERFORMANCE	Target	5%	6%	CSC 188: % of children becoming subject to a CPP for a 2nd or subsequent time within 2 years of a previous plan ending (Cumulative)
	Apr-19	0.0	0.0	
	May-19	0.0	0.0	
	Jun-19	0.0	0.0	
	Jul-19	0.0	0.0	
	Aug-19	0.0	0.0	
	Sep-19	0.0	0.0	
	Oct-19	0.9	0.0	
	Nov-19	0.8	0.0	
	Dec-19	0.8	0.8	
	Jan-20	0.7	0.8	
	Feb-20	0.7	2.2	
	Mar-20	0.6	3.2	
ANNUAL TREND	2016/17	0.0	1.9	
	2017/18	0.0	6.5	
	2018/19	1.6	3.9	
	2019/20	0.6	3.2	

CHILD PROTECTION - STATUTORY VISITS

DEFINITION

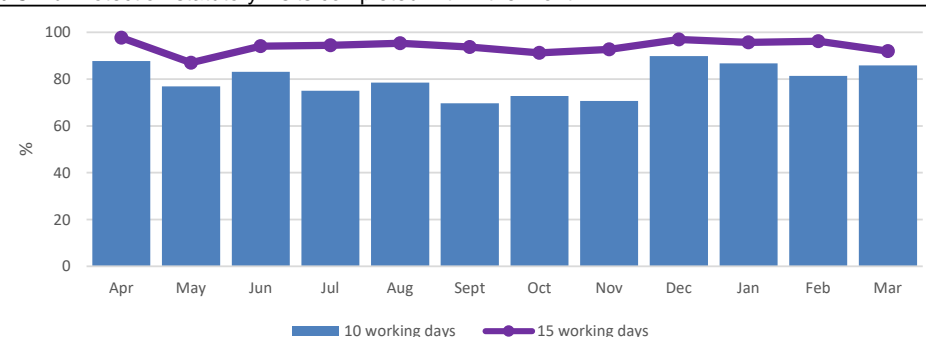
Percentage of children subject to a Child Protection Plan who had all statutory visits carried out within timescales and percentage of Child Protection statutory visits completed within timescale monthly and year to date.

PERFORMANCE ANALYSIS

79.6% (2,294/2,881) of Child Protection statutory visits were completed within 10 working days during 2019/20. The percentage of visits completed within 10 working days during 2019/20 was similar to the same period last year (79.3%).
93.8% (2,701/2,881) of the cumulative visits were completed within 15 working days during 2019/20.

CSC 252a		CSC 252b	
% Child Protection statutory visits completed within 10 working days within the month	% Child Protection statutory visits completed within 15 working days within the month	% Child Protection statutory visits completed within 10 working days year to date (cumulative)	% Child Protection statutory visits completed within 15 working days year to date (cumulative)

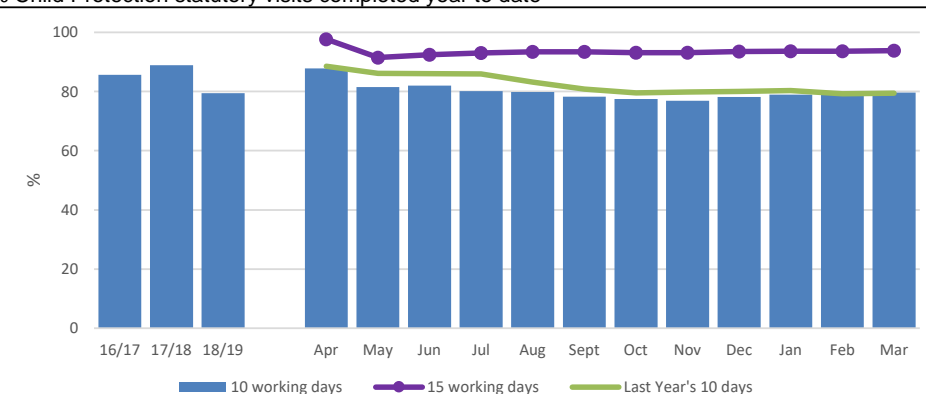
% Child Protection statutory visits completed within the month



IN MONTH PERFORMANCE

Target	90	90	90	90
Apr-19	87.8	97.7	87.8	97.7
May-19	77.0	87.0	81.5	91.5
Jun-19	83.2	94.1	82.0	92.4
Jul-19	75.0	94.5	80.2	93.0
Aug-19	78.5	95.3	79.9	93.4
Sep-19	69.7	93.7	78.2	93.4
Oct-19	72.8	91.2	77.5	93.1
Nov-19	70.6	92.8	76.8	93.1
Dec-19	89.9	96.5	78.2	93.4
Jan-20	86.8	95.7	79.0	93.6
Feb-20	81.4	96.2	79.1	93.9
Mar-20	85.9	92.0	79.6	93.8

% Child Protection statutory visits completed year to date



ANNUAL TREND

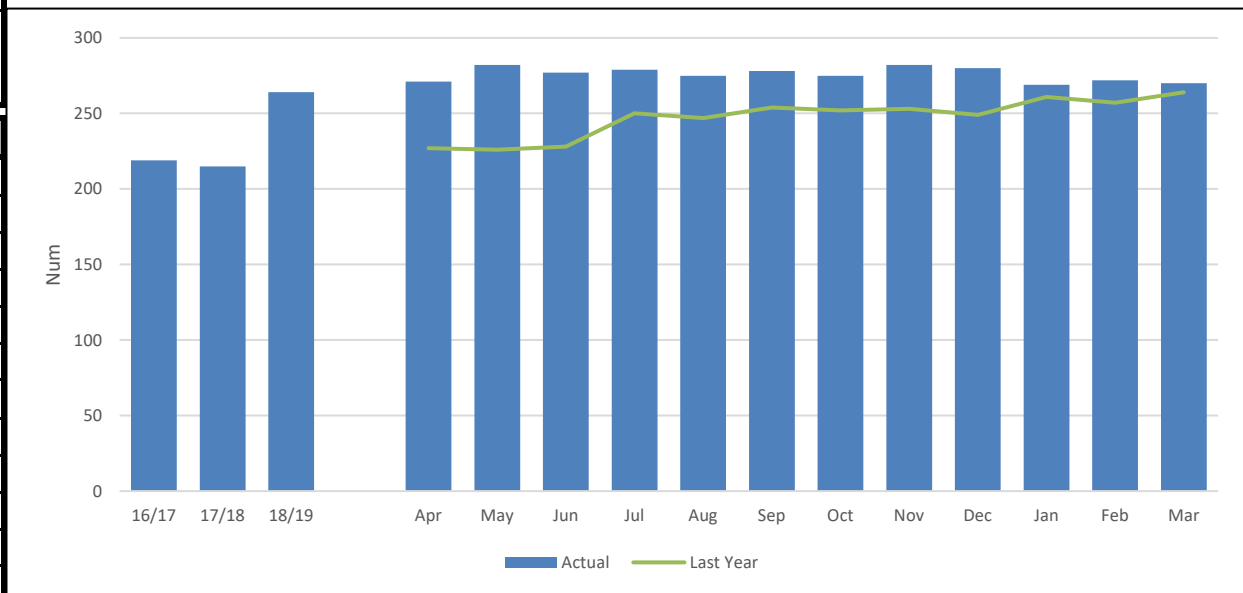
2016/17	85.6		85.6	
2017/18	88.9		88.9	
2018/19	79.3	95.7	79.3	95.7
2019/20	85.9	92.0	79.6	93.8

CHILDREN IN CARE

DEFINITION	Number of Children in Care at the end of each month.
PERFORMANCE ANALYSIS	270 children are currently in care as at March 2020 which is similar to the number of children (264) that were in care as at March 2019.

CSC 201		
Total number of Children in Care		
IN MONTH PERFORMANCE	Target	
	Apr-19	271
	May-19	282
	Jun-19	277
	Jul-19	279
	Aug-19	275
	Sep-19	278
	Oct-19	275
	Nov-19	282
	Dec-19	280
	Jan-20	269
	Feb-20	272
	Mar-20	270
ANNUAL TREND	2016/17	219
	2017/18	215
	2018/19	264
	2019/20	270

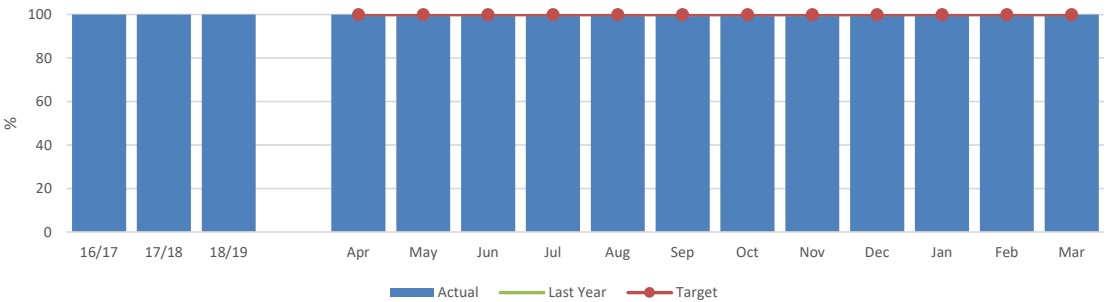
CSC 201: Total number of Children in Care



CHILDREN IN CARE - ALLOCATION & REVIEWS

DEFINITION	<p>The percentage of Children in Care cases which should have been reviewed during the year ending 31 March that were reviewed on time during the year and the percentage of Children in Care cases that were allocated to a qualified Social Worker at the end of the month.</p> <p>To improve compliance with local authorities' legal requirements under the Review of Children's cases Regulations 1991. The purpose of the review is to consider the plan for the child's welfare, to monitor the progress of the plan and amend it as necessary in light of changed information and circumstances. The statutory intervals are within 20 working days of placement, then within 3 months and 6 monthly thereafter, but reviews may be rescheduled or held inside these intervals if there are significant changes to the child's care plan.</p>
------------	---

PERFORMANCE ANALYSIS	<p>100% of Children in Care (CiC) are allocated to a qualified social worker.</p> <p>All reviews during 2019/20, except 1 in February, have been completed within the required timescale.</p>
----------------------	---

		CSC 227 % Children in Care allocated to a qualified Social Worker	CSC 218 % of Children in Care whose reviews had been completed within required timescales (as at month end)	CSC 227: % Children in Care allocated to a qualified Social Worker
IN MONTH PERFORMANCE	Target	100	100	
	Apr-19	100.0	100.0	
	May-19	100.0	100.0	
	Jun-19	100.0	100.0	
	Jul-19	100.0	100.0	
	Aug-19	100.0	100.0	
	Sep-19	100.0	100.0	
	Oct-19	100.0	100.0	
	Nov-19	100.0	100.0	
	Dec-19	100.0	100.0	
	Jan-20	100.0	100.0	
	Feb-20	100.0	99.6	
	Mar-20	100.0	100.0	
				CSC 218: % of Children in Care whose reviews had been completed within required timescales (as at month end)
ANNUAL TREND	2016/17	100.0	88.0	
	2017/18	100.0	100.0	
	2018/19	100.0	100.0	
	2019/20	100.0	100.0	

CHILDREN IN CARE - STATUTORY VISITS

DEFINITION

Percentage of Children in Care who had all statutory visits completed within required timescales and percentage of Children in Care's statutory visits completed within timescales year to date.

PERFORMANCE ANALYSIS

89.0% (3,075/3,456) of Child in Care (CiC) statutory visits have been completed in timescale during 2019/20. This is an increase on the 82.6% (2,389/2,893) CiC statutory visits completed in timescale during 2018/19. There has also been a 19.5% increase in the number of visits taking place from 2,893 during 2018/19 to 3,456.

CSC 260b

CSC 260b: % Child in Care statutory visits completed in timescale year to date

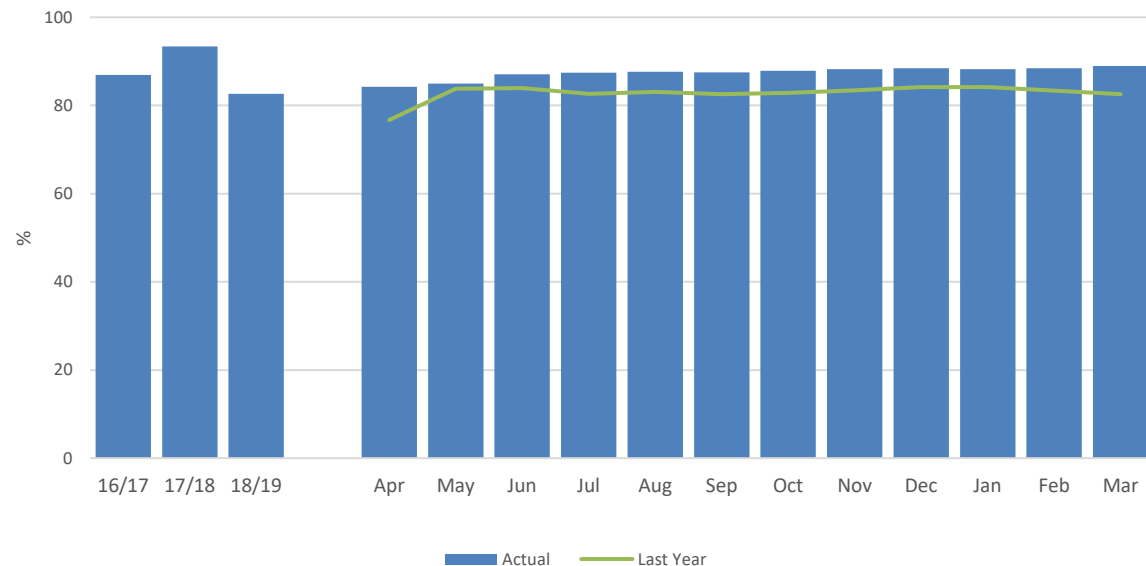
% Child in Care statutory visits completed in timescale year to date

IN MONTH PERFORMANCE

Target	90
Apr-19	84.2
May-19	85.0
Jun-19	87.1
Jul-19	87.5
Aug-19	87.6
Sep-19	87.5
Oct-19	87.9
Nov-19	88.2
Dec-19	88.5
Jan-20	88.3
Feb-20	88.4
Mar-20	89.0

ANNUAL TREND

2016/17	86.9
2017/18	93.4
2018/19	82.6
2019/20	89.0



CHILDREN IN CARE - PLACEMENTS	
DEFINITION	<p>Of those Children in Care at the point in time (excluding series of short-term placements), the percentage that had 3 or more separate placements in the previous 12 months; who had been in their current placement for 2 or more years. and who were placed more than 20 miles away from their home address.</p> <p>On the whole stability is associated with better outcomes; placement instability has been highlighted as a key barrier to improving educational outcomes. Proper assessment and an adequate choice of placements to meet the varied needs of different children are essential if appropriate stable placements are to be made. Inappropriate placements often break down and lead to frequent moves. Nevertheless, the circumstances of some individual children will require 3 or more separate placements during a year if they and others are to be kept safe.</p>
PERFORMANCE ANALYSIS	<p>11.1% (30/270) of Children in Care (CiC) as at March 2020 have had 3 or more placements within the previous 12 months.</p> <p>As at March 2020, 73.6% (67/91) of Darlington's CiC, aged under 16 (who have been looked after for at least 2.5 years), have been in their current placement continuously for at least 2 years. This is above the target of 68.0%, the national average (69.0), our statistical neighbours (69.8) and regional average (69.0).</p> <p>9.6% of Darlington's CiC have been placed 20 or more miles away from home as at March 2020, which is similar to that in March 2019 (9.7%) and below target of 10.0%. All children who are placed over 20 miles away have placements that are confirmed as appropriate for the child, enabling them to have the best support either with family links or specialised care.</p>

		CSC 228	CSC 229	CSC 230	CSC 228: % Children in Care with 3 or more placements moves during last 12 months
		% Children in Care with 3 or more placements moves during last 12 months	% Children in Care who have been in their current placement for 2 or more years	% Children in Care placed 20 miles or more away from home	
IN MONTH PERFORMANCE	Target	10%	68%	10%	
	Apr-19	10.3	67.1	8.8	
	May-19	11.7	69.6	11.2	
	Jun-19	13.0	72.2	9.2	
	Jul-19	12.2	70.5	9.5	
	Aug-19	12.0	73.9	10.3	
	Sep-19	11.9	70.9	9.8	
	Oct-19	11.6	74.4	10.7	
	Nov-19	11.4	73.6	10.5	
	Dec-19	10.7	72.7	10.3	
	Jan-20	11.5	73.0	10.0	
	Feb-20	12.1	72.2	9.5	
	Mar-20	11.1	73.6	9.6	
ANNUAL TREND	2016/17	14.1	52.4	7.8	
	2017/18	9.8	65.1	12.0	
	2018/19	9.5	64.4	9.7	
	2019/20	11.1	73.6	9.6	

CHILDREN IN CARE - INITIAL HEALTH ASSESSMENTS

DEFINITION

Percentage of Initial Health Assessments completed within 20 working days of a child coming into our care year to date (data from Health), and percentage of IHA forms returned to Health within 7 working days.

PERFORMANCE ANALYSIS

Health report a 76.4% completion of their health assessment within 20 working days during Q3. Awaiting Q4 data.

% Newly in to care with a completed Initial Health Assessment within 20 working days (from Health)

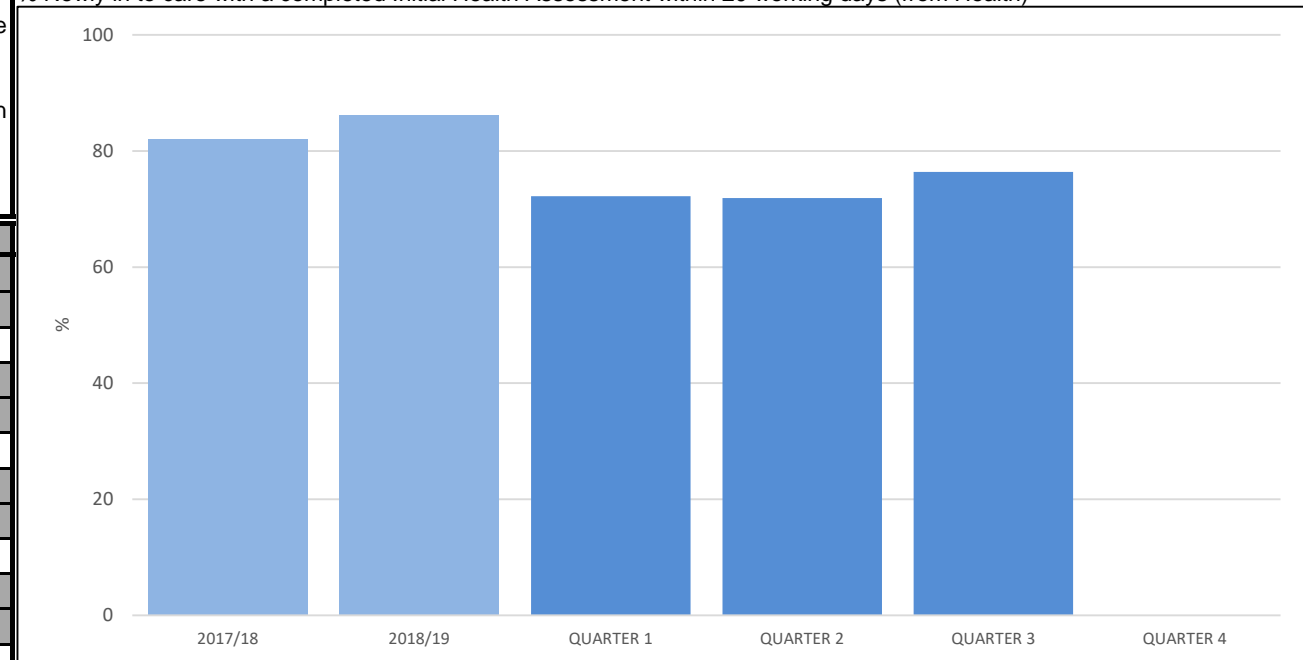
% Newly in to care with a completed Initial Health Assessment within 20 working days (from Health)

IN MONTH PERFORMANCE

Target	95
Apr-19	
May-19	
Jun-19	72.2
Jul-19	
Aug-19	
Sep-19	71.9
Oct-19	
Nov-19	
Dec-19	76.4
Jan-20	
Feb-20	
Mar-20	TBC

ANNUAL TREND

2016/17	54.0
2017/18	82.0
2018/19	86.2
2019/20	73.5%



CHILDREN IN CARE - HEALTH ASSESSMENTS

DEFINITION

Of the Children in Care (CiC) at 31 March who had been in care continuously for at least 12 months, the percentage who have had their Review Health Assessment (RHA) completed and the percentage who have an up to date Health Check.
Children in Care share many of the same health risks and problems as their peers, but often to a greater degree. These indicators track the participation of our Children in Care's health as a proxy for monitoring the general health and wellbeing of the children, as well as providing a check on the effectiveness of joint working with Health to secure good health outcomes for Children in Care.

PERFORMANCE ANALYSIS

91.2% (177/194) of children due a review health assessment during the 2019/20 period had one completed, which is an improvement from 87.9% (March 2019), and is also above the target of 90%. Currently 3.1% of the young people are refusing to engage in their review health check, although they are continually reminded of the benefits of having a check up and encouraged to take part.

CSC 250

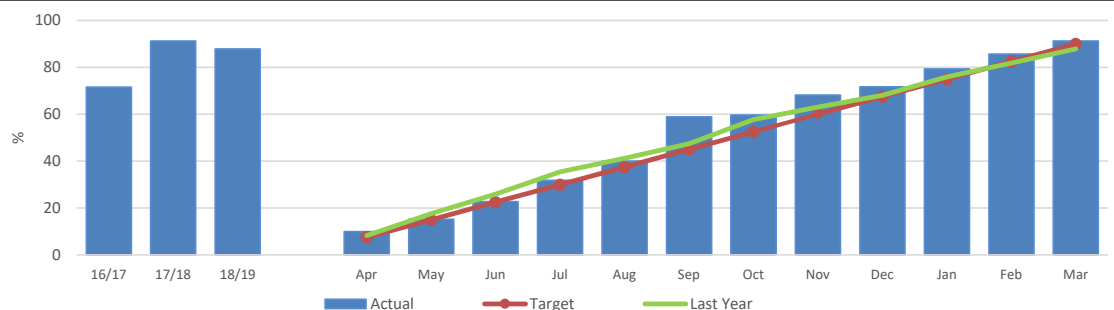
The % of CiC who have an up to date Health Checks (excludes any who will turn 18 before 31st March)

The % of CiC who were due a Review Health Check (year to date) who refused to engage

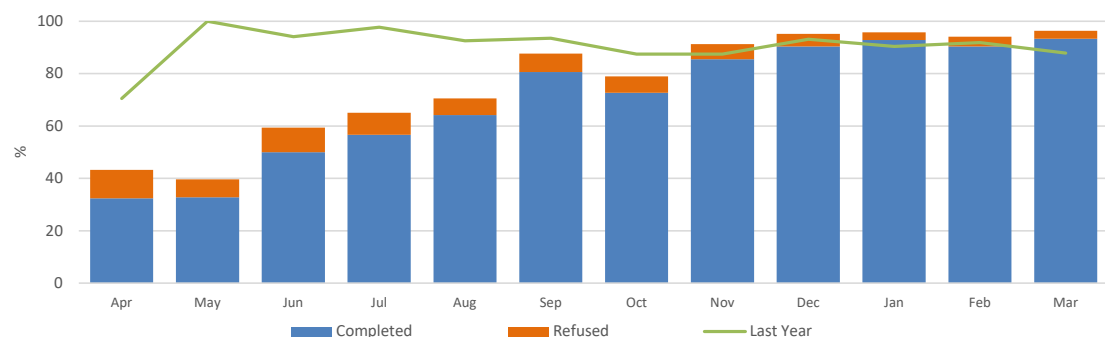
CSC 250b

The % of Children in Care who were due a Review Health Check year to date and were completed and recorded

CSC 250: % of CiC who are up to date for a Review Health Check at 31st March



CSC 250b: % of CiC due a Review Health Check during the year (to date) that have had one, and % that refused



IN MONTH PERFORMANCE	Target	90%		90%
	Apr-19	9.9	10.8	32.4
	May-19	15.3	6.9	32.8
	Jun-19	22.7	9.4	50.0
	Jul-19	31.9	8.4	56.6
	Aug-19	40.0	6.3	64.2
	Sep-19	58.9	7.1	80.6
	Oct-19	59.7	6.3	72.7
	Nov-19	68.1	5.8	85.5
	Dec-19	71.6	4.8	90.4
	Jan-20	79.3	3.0	92.8
	Feb-20	85.7	3.7	90.4
	Mar-20	91.2	3.1	93.3
ANNUAL TREND	2016/17	71.6		
	2017/18	91.3		
	2018/19	87.9		87.9
	2019/20	91.2	3.1	93.3

CHILDREN IN CARE - DENTAL HEALTH ASSESSMENTS

DEFINITION

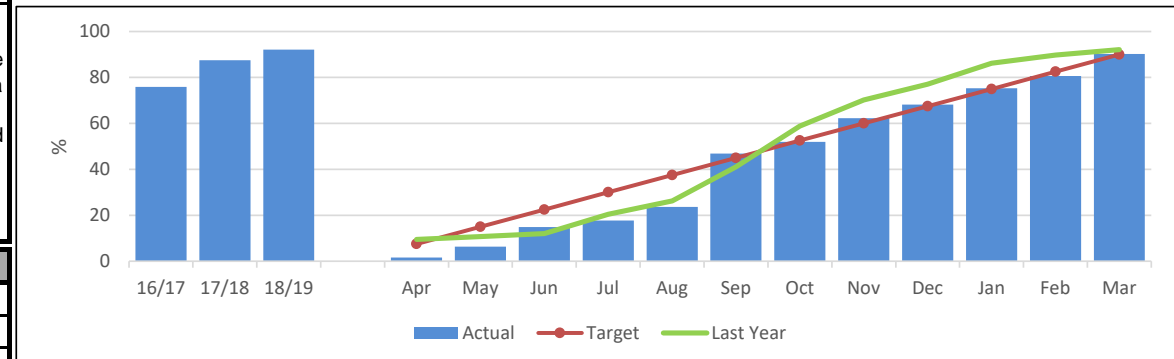
Of the Children in Care (CiC) at 31 March who had been in care continuously for at least 12 months, the percentage who had had their teeth checked by a dentist during the previous 12 months, and the percentage who had had an annual health check during the previous 12 months.
Children in Care share many of the same health risks and problems as their peers, but often to a greater degree. These indicators track the participation of our Children in Care with dental checks as a proxy for monitoring the general health and wellbeing of the children, as well as providing a check on the effectiveness of joint working with Health to secure good health outcomes for Children in Care.

PERFORMANCE ANALYSIS

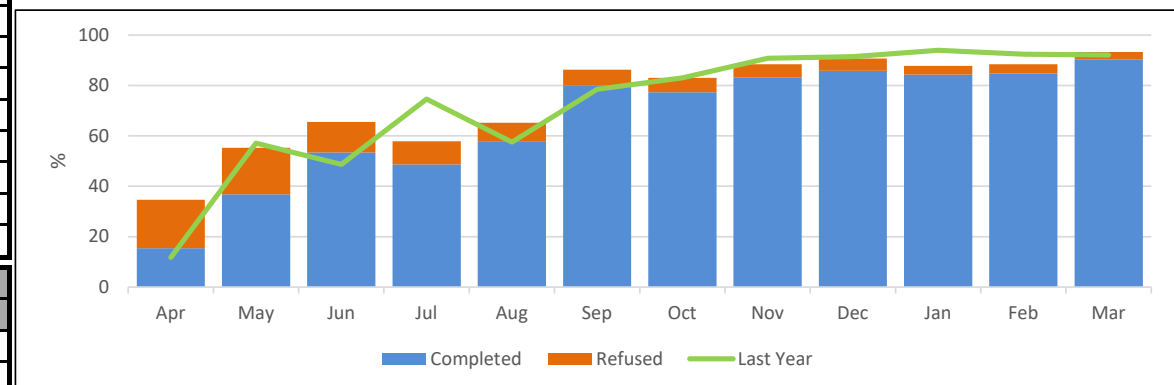
90.2% (175/194) of children due a dental check assessment had one completed. This is in line with our target of 90% although a decrease on the 92.1% completed during the 2018/19 period. However, there has been a 17.5% increase in checks completed. Currently 3.1% of the young people are refusing to engage in their review health check, although they are reminded of the benefit of having a check-up and encouraged to take part.

CSC 251		CSC 251d
The % of Children in Care with up to date Dental Checks (excludes any who will turn 18 before 31st March)	The % of Children in Care who were due a Dental Check (year to date) who refused to engage	The % of Children in Care who were due a Dental Check year to date and were up to date by the report date

CSC 251: % of Children in Care who are up to date for a Dental Check at 31st March



% of Children in Care due a Dental Check (to date) that have had one, and the % that refused



IN MONTH PERFORMANCE	Target	90%		90%
	Apr-19	1.7	19.2	15.4
	May-19	6.4	18.4	36.8
	Jun-19	14.9	12.1	53.5
	Jul-19	17.7	9.2	48.7
	Aug-19	23.6	7.6	57.6
	Sep-19	46.9	6.5	79.8
	Oct-19	51.9	5.7	77.3
	Nov-19	62.3	5.2	83.2
	Dec-19	68.2	4.9	85.8
	Jan-20	75.3	3.4	84.4
	Feb-20	80.6	3.7	84.7
	Mar-20	90.2	3.1	90.2
ANNUAL TREND	2016/17	75.9		
	2017/18	87.5		
	2018/19	92.1		92.1
	2019/20	90.2	3.1	90.2

CARE LEAVERS

DEFINITION

The percentage of 'former relevant' care leavers aged 19-21 who were in suitable accommodation at their most recent contact, and the percentage who were not in employment, education or training at their most recent contact. Published data is included for comparison however data submitted to DfE by Local Authorities captures the young person's status around their 19th, 20th, or 21st birthday each year rather than the latest available information.

This measures accommodation and employment outcomes for young people formerly in care - a key group at risk of social exclusion. It is intended to increase the proportion of former care leavers who are in suitable accommodation and employment, education or training.

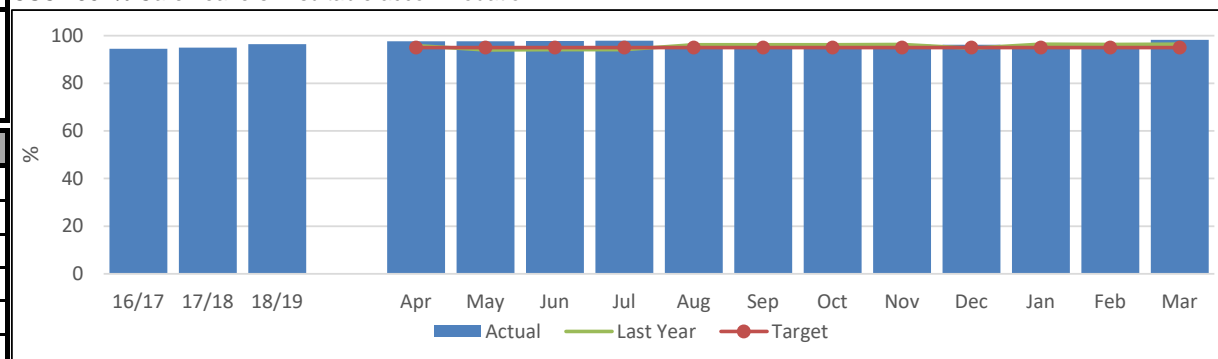
PERFORMANCE ANALYSIS

98.2% (56 out of 57) of care leavers in Darlington were in suitable accommodation at the end of March 2020. The young person not in suitable accommodation was due to them being in custody. This is above the target of 90% of the care leavers being in suitable accommodation and an improvement on the 96.4% as at March 2019.

28.1% of care leavers (aged 19-21) were Not in Education, Employment or Training (NEET) at the end of March 2020, which is below the target of 30%. Of these, 12.3% were NEET due to disability or illness, a further 7.0% due to pregnancy or parenting and the remaining 8.8% for other circumstances.

		CSC 286	CSC 294
		% Care Leavers in suitable accommodation	% Care Leavers NEET
IN MONTH PERFORMANCE	Target	90%	30%
	Apr-19	97.7	27.9
	May-19	97.7	30.2
	Jun-19	97.8	29.6
	Jul-19	97.9	27.7
	Aug-19	95.9	24.5
	Sep-19	96.2	23.1
	Oct-19	96.2	25.0
	Nov-19	96.2	26.4
	Dec-19	96.2	22.6
	Jan-20	96.2	22.6
	Feb-20	96.4	23.6
	Mar-20	98.2	28.1
ANNUAL TREND	2016/17	96.4	30.6
	2017/19	94.9	32.2
	2018/19	96.4	25.0
	2019/20	98.2	28.1

CSC 286: % Care Leavers in suitable accommodation



CSC 294: % Care Leavers NEET

